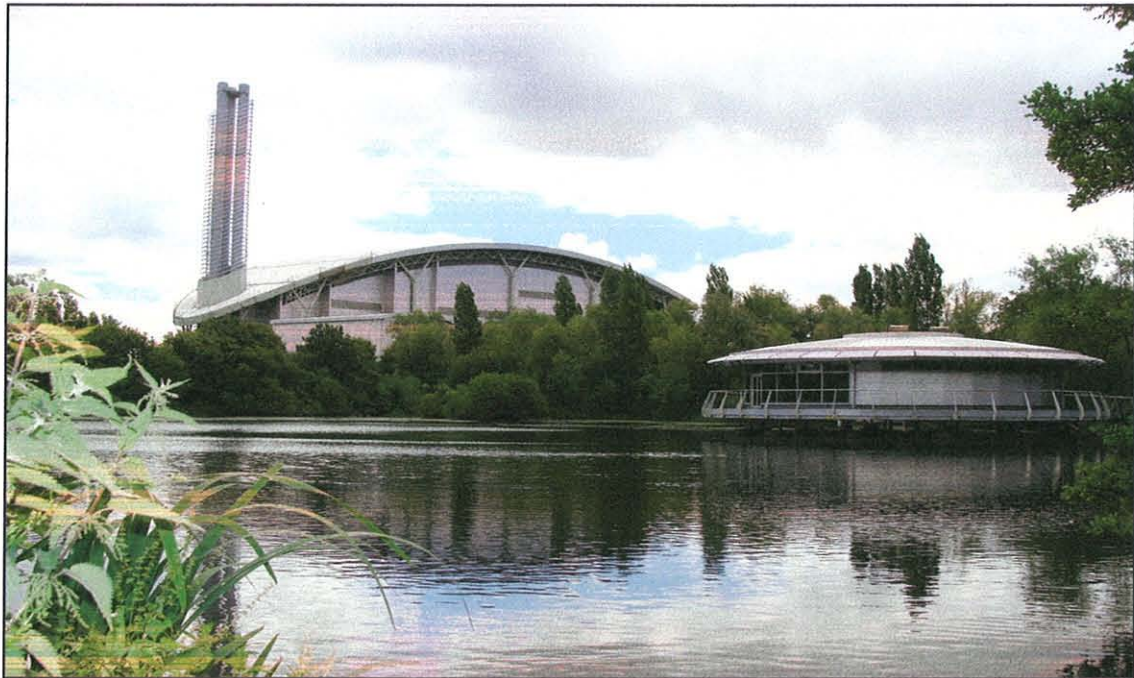




**Annual Performance Report  
For Lakeside EFW Ltd  
Permit EA/EPR/BT7116IW/V002  
2010**



## Introduction

PPC permit EA/EPR/BT7116IW/V002 requires the following requirements to be reported on annually each year:-

4.2.2 A report or reports on the performance of the activities over the previous year shall be submitted to the agency by 31 January (or the date agreed in writing by the agency) each year. The report shall include as a minimum:

- a) A review of the results of the monitoring and assessment carried out in accordance with the permit including an interpretive review of the data;
- b) The annual production/ treatment data set out in schedule table 5.2; and
- c) The performance parameters set out in schedule 5 table S5.3 using the forms specified in table S5.4 of that schedule.
- d) The functioning and monitoring of the incineration plant in a format agreed with the Environment Agency. The report shall as a minimum requirement (as required by article 12(2) of the waste incineration Directive) give an account of the running of the process and the emissions into air and water compared with the emissions standards in the WID

Form S3/0/1 was submitted separately to the Environment agency. The totals for the year are summarised in the table below.

Total waste incinerated (Tonnes)	Total bottom ash produced (Tonnes)	% Bottom ash recycled (Tonnes)	Total APC residues produced (Tonnes)	% APC residue recycled	% Carbon in the bottom ash (TOC)
383715	75633	100	11118	0	Average 0.92

The design capacity of the plant is 411000 tonnes a year. The Plant was not handed over until 15<sup>th</sup> January and was followed by an inspection outage as part of the terms of takeover. This meant no waste was incinerated in January.

$$\frac{411000 \times 11 \text{ Months}}{12 \text{ Months}} = 376750 \text{ tonnes.}$$

The percentage bottom ash for the year is 19.71% with 2.90 % APC residue. The bottom ash is recycled leaving only the APC residue going to landfill.

There is less than 1% carbon in the bottom ash which is within the 3% limit set in WID and demonstrates an efficient burn process.

### Downtime and Abnormal Operation

Form S3/0/2 and S3/0/3 were submitted separately to the Environment agency. The totals for the year are summarised below.

	Line A1		Line A1	
	Cumulative Hours of Abnormal operation	Hours of non operation	Cumulative Hours of Abnormal operation	Hours of non operation
January	N/A	N/A	N/A	N/A
February	3	21	5	20.5
March	6	0.5	13.5	0
April	6	0.75	13.5	43
May	6	119	13.5	12.75
June	6	32	13.5	8.5
July	6	6	13.5	267
August	6.5	1.75	14	6
September	6.5	373	14	326
October	6.5	1	14	5
November	6.5	33	14	38
December	6.5	47	14	120
Total	6.5	635	14	846.75
% Availability		92.08		89.44

The downtime for the plant has been minimal and above the 87% target value. The shutdowns above include outage work which is essential to maintain the running of the plant.

The hours of abnormal operation are within the 60 hour limit set by WID. Problems were experienced early on in the plants first few months of running. These improved with only a half hour of abnormal running for both lines in the second half of the year.

### Noise and Vibration

Form S3/N/1 was submitted separately to the Environment agency. The totals for the year are summarised below.

The levels of noise emitted from the site shall not exceed the limits in table 3.4.1 as measured or assessed at agreed locations specified in the table.

Location	L <sub>Aeq, 5 minute</sub> dB(A)	
Pippins School	39	Bi-Annual
The Hawthorns	39	Bi-Annual
Myrtle Close	39	Bi-Annual

Maximum measured value
L <sub>Aeq,T</sub> (dB(A))
38.5
38.5
38.3

Recorded noise levels were lower than the permitted values. The highest values recorded were with the ACC units on 100% duty.

### Odour

There have been no odour releases from site and no substantiated odour complaints received during 2010.

### Emissions

Forms S3/A/1 was submitted separately to the Environment agency for lines A1 and A2. The average recorded emission values for the year are summarised below for the continuous monitoring.

Substance	Daily emission limit mg/Nm <sup>3</sup>	Average annual emission mg/Nm <sup>3</sup> Line A1	Average annual emission mg/Nm <sup>3</sup> Line A2
NO <sub>x</sub>	200	154.22	144.30
HCl	10	6.12	5.25
SO <sub>2</sub>	50	4.29	3.08
CO	50	14.58	8.97
TOC	10	2.30	1.24
Ammonia	No limit	0.15	0.17
Active Dust	10	1.18	1.48
Active Dry O <sub>2</sub>	No limit	8.11%	7.85%
HF	2	0.18	0.44
CO <sub>2</sub>	No limit	10.48 %	10.66 %

Forms S3/A/2, S3/A/3 and S3/A/4 were submitted separately to the Environment agency for lines A1 and A2. All parameters were within the Environmental Permit limits.

Form S3/P/1 is the first year of running so there is no data available to compare at the moment. The plant has run satisfactorily, especially considering it is the first year of operation.

REPORTING OF MONITORING DATA

Monitoring summary for the 12 months ending December 2010

Operator: Lakeside Energy from Waste Ltd.

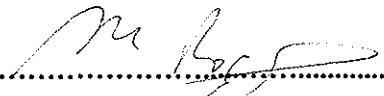
Permit Number: EA/EPR/BT71161W/V002

Location: Colnbrook, Slough

Incinerator No. A1 and A2

Parameter	Quantity	Units	Performance	Units
Waste Incinerated	383715	tonnes		
Water usage	81014	tonnes	0.2111	tonnes/tonne incinerated
Energy usage	25958	MWh	0.068	MWh/tonne incinerated
Steam exported	0	tonnes	N/A	tonnes/tonne incinerated
Total lime used	4616	tonnes	0.012	tonnes/tonne incinerated
Total activated carbon used	201	tonnes	0.0005	tonnes/tonne incinerated

Signed on behalf of the Operator

  
.....

Dated

28/1/11  
.....